



# VMAX

ULTRA REALISTIC PAPER CRAFTS

## Assembly Instructions

### vol.5 Tire | Front and Rear Tires, Rear Flasher Light, etc.



Thank you for downloading the super precise paper craft "VMAX" vol.5.  
Please refer to this manual and assemble all the parts from vol.1 to vol.5.  
A realistic recreation of the VMAX will be the result.

**This is the assembly manual for "VMAX" vol.5. Please download the parts data separately.**

We recommend a somewhat thick A4 size paper (about the thickness of a regular Japanese postcard) to print out this parts data.

## To begin

### ■ Tools and materials needed

-Ruler - scissors - blade cutter or "Exacto-knife" - awl or other pointed tool (for making a folding crease) - felt pen - pin set - glue - hand towel ( for cleaning your fingers) - dictionary or other heavy book ( to press the papers flat).

### ■ Items of Caution

\*Take care when using sharp or pointed objects or when using bladed cutting tools. Place a heavy sheet of paper under the paper you want to cut.

\*Use glue and other adhesives only in well-ventilated areas.

\*When printing, use a slightly reduced font size. There may be differences in dimensions, depending on the type of printer used.

## How to assemble

\*Follow the working method and markings carefully.

\*Cut carefully along the outter line with cutting blade, Exacto-knife or scissors.

## One - point Advice

\*Cut carefully with cutting blade, Exacto-knife or scissors.

\*For folding parts, first use an awl or other pointed tool to make a light crease along the dotted or solid line. This will make the folds straight. Avoid making strong creases, as this will cause the paper to tear.

\*As an adhesive, white wood glue is recommended. Avoid over application as this may cause the paper to wrinkle.

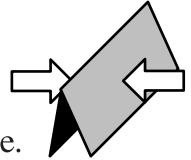
\*Before beginning assembly, test adhesive amounts on extra paper.

\*Occasionally, white spots will be apparent on folds and cuts. Use a marker or pencil to fill in these spots. It is recommended that this be done after each stage of assembly because coloring becomes more difficult once parts are assembled.

## Basic working method and markings

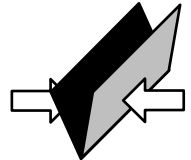
### ————— Solid lines

Fold along these lines.  
The printed surface should be on the outside of the folded shape.



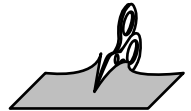
### ----- Broken lines

Fold along these lines.  
The printed surface should be on the inside of the folded shape.

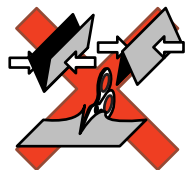


### ----- Dotted line

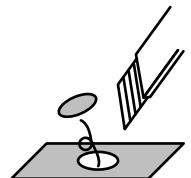
Cut along these lines.



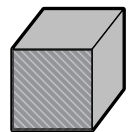
Do not fold or cut the parts marked X.



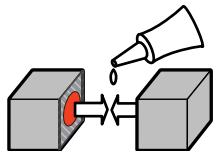
Cut out parts marked with an asterisk(\*).



These shaded areas indicate where glue should be applied.



Red circles are the reference positions for gluing surfaces.



Please glue them by aligning the red and red/blue and blue parts if they are marked on the paper.



# 16 Assembling the Front Tire

First, assemble each component by following the working method and markings. Then, refer to the illustration and photos below to glue the parts together.

Indication of Working Methods

---> Fold or Curve    --> Glue

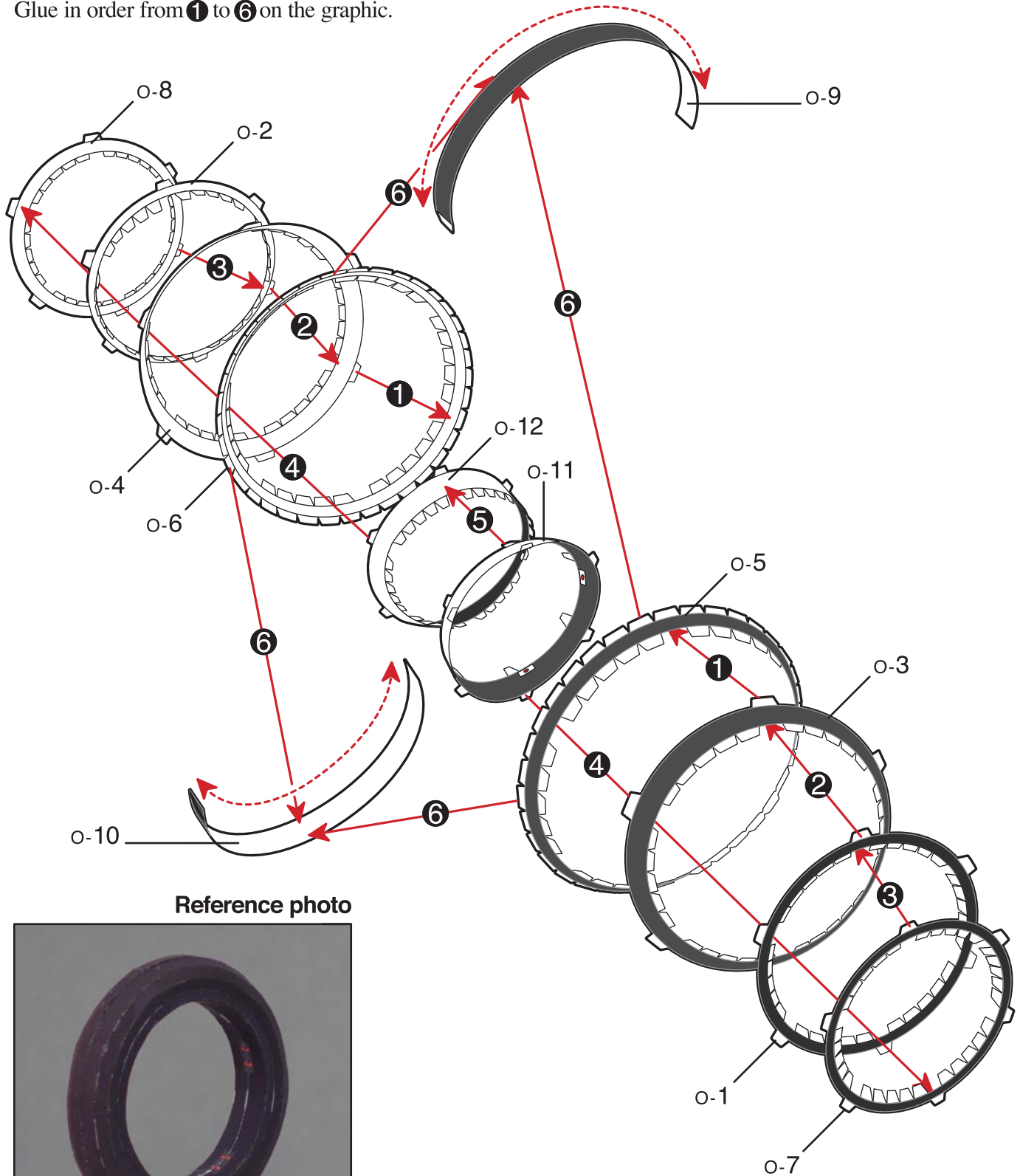
## Front Tire

Sheet O, 12 parts in total

Fold each relevant part according to the assembly symbols.

Please use the ● dots on each component as reference when gluing surfaces.

Glue in order from ① to ⑥ on the graphic.



## 16 Assembling the Front Tire

First, assemble each component by following the working method and markings. Then, refer to the illustration and photos below to glue the parts together.

Indication of Working Methods

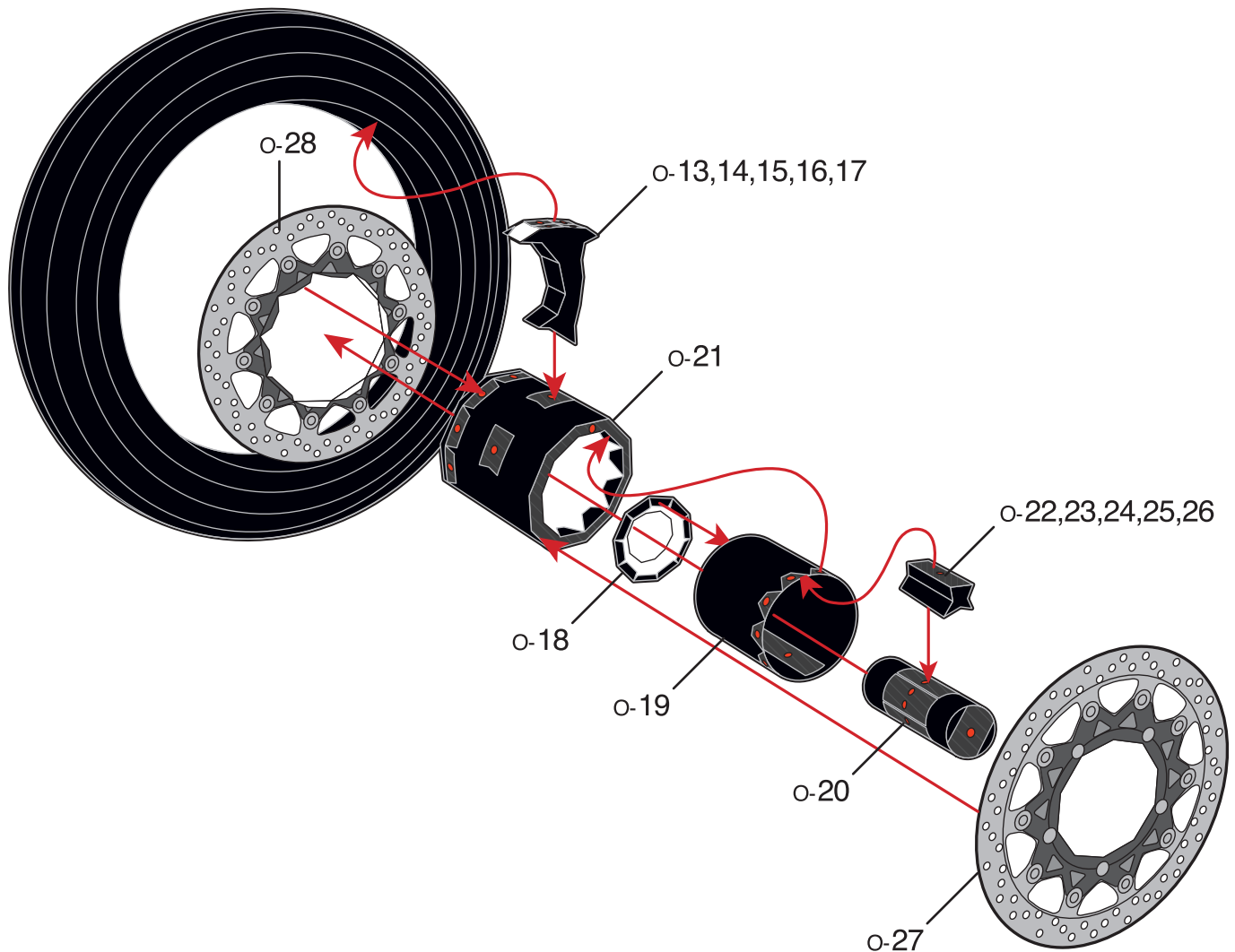
---> Fold or Curve    --> Glue

### Front Tire

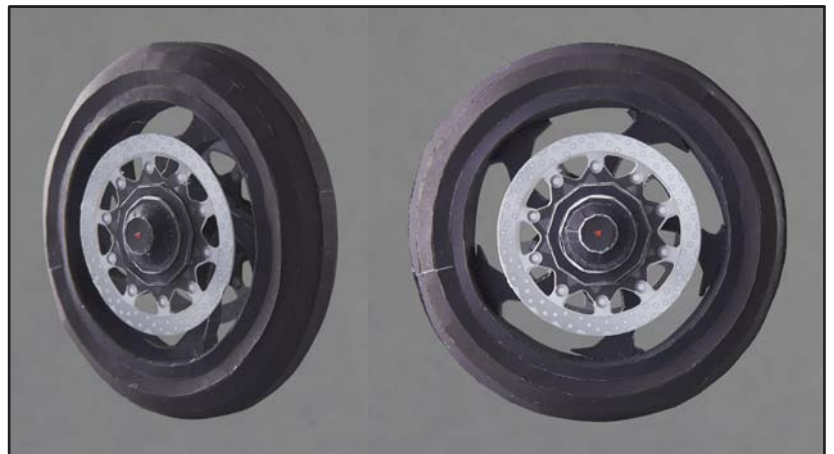
Sheet O, 28 parts in total

Fold each relevant part according to the assembly symbols.

Please use the ● dots on each component as reference when gluing surfaces.



Reference photo





# 17 Assembling the Rear Tire

First, assemble each component by following the working method and markings. Then, refer to the illustration and photos below to glue the parts together.

Indication of Working Methods

---> Fold or Curve    --> Glue

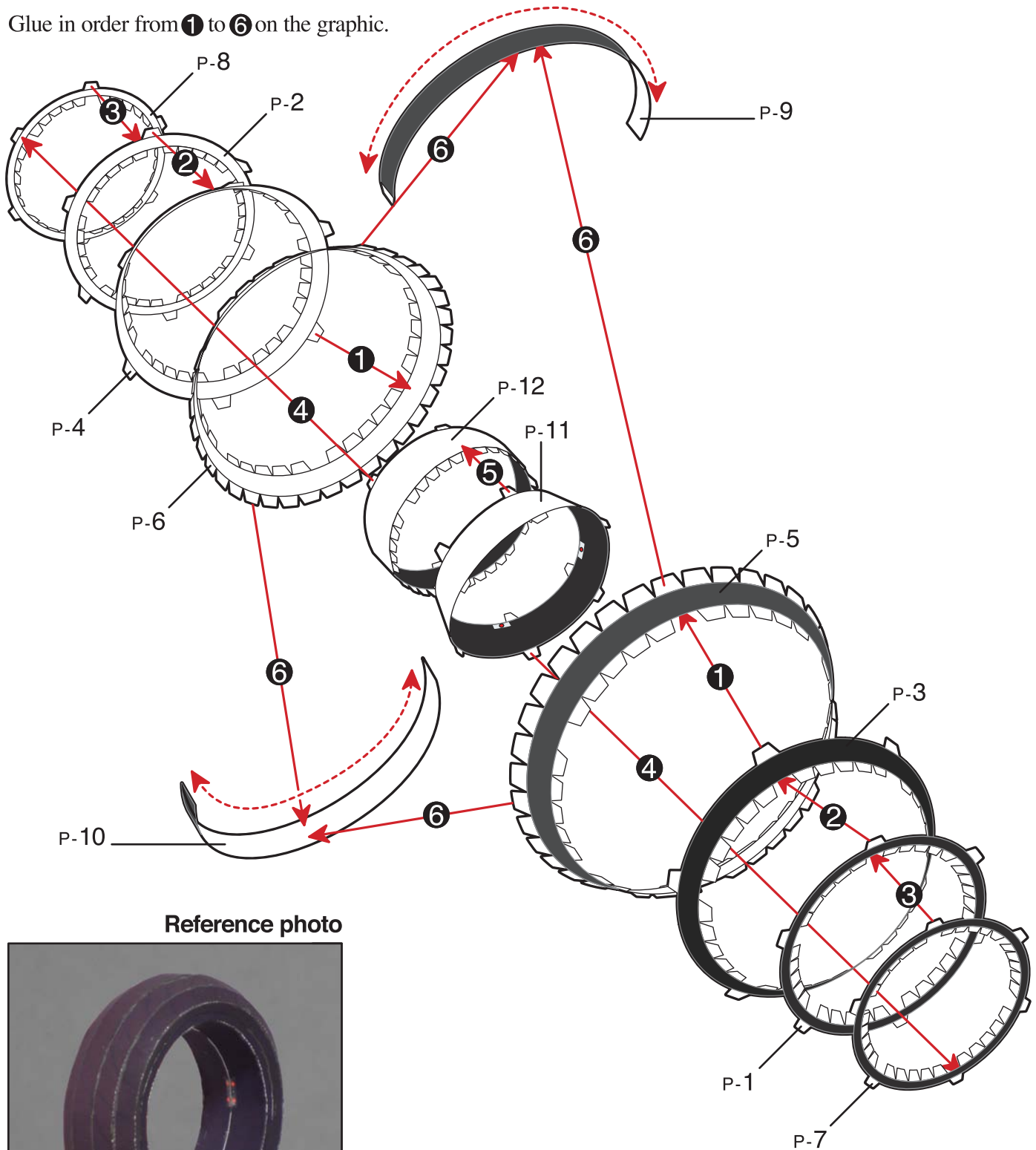
## Rear Tire

Sheet P, 12 parts in total

Fold each relevant part according to the assembly symbols.

Please use the ● dots on each component as reference when gluing surfaces.

Glue in order from ① to ⑥ on the graphic.



Reference photo



# 17 Assembling the Rear Tire

First, assemble each component by following the working method and markings. Then, refer to the illustration and photos below to glue the parts together.

Indication of Working Methods

---> Fold or Curve → Glue

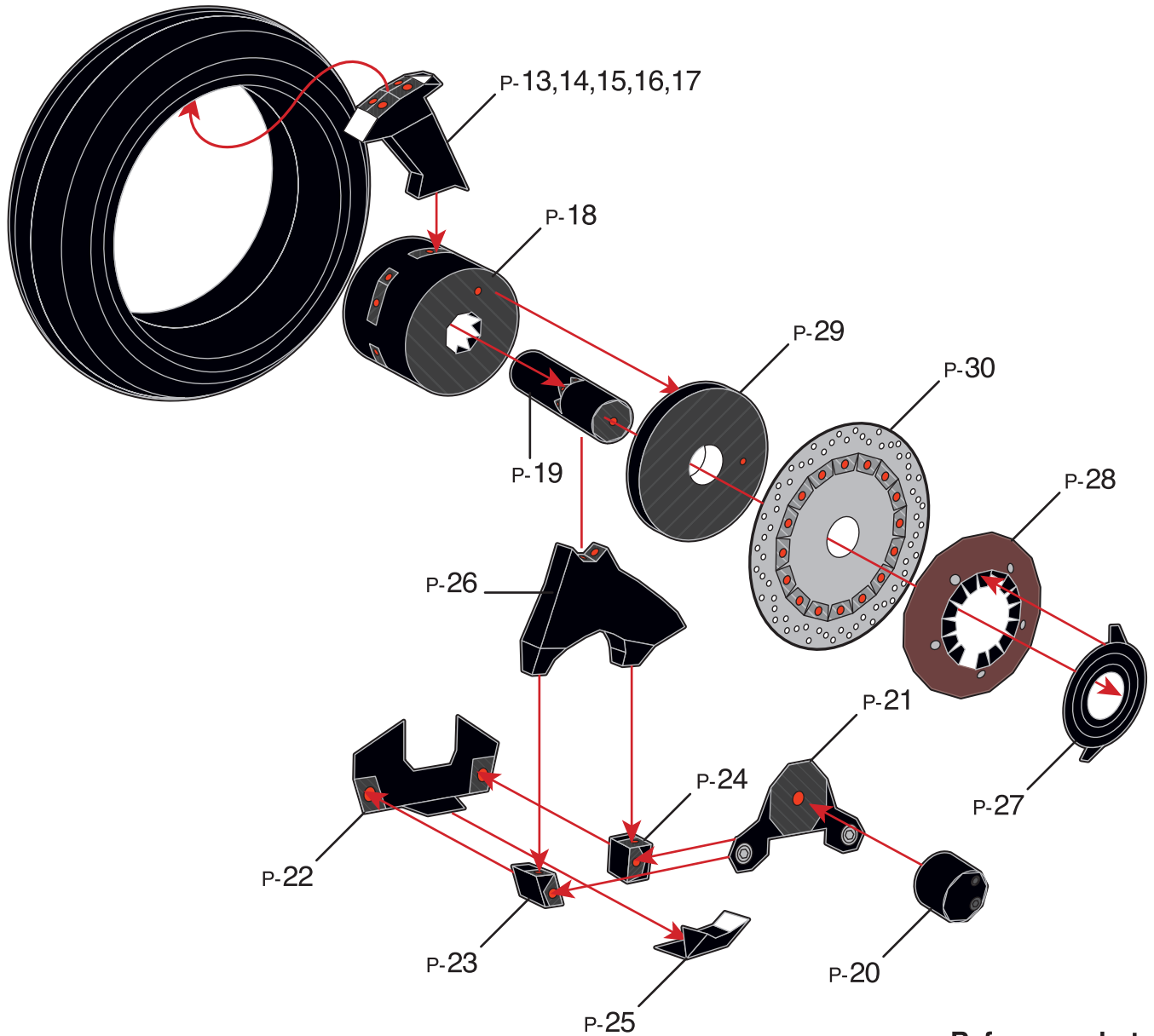
## Rear Tire

Sheet P, 30

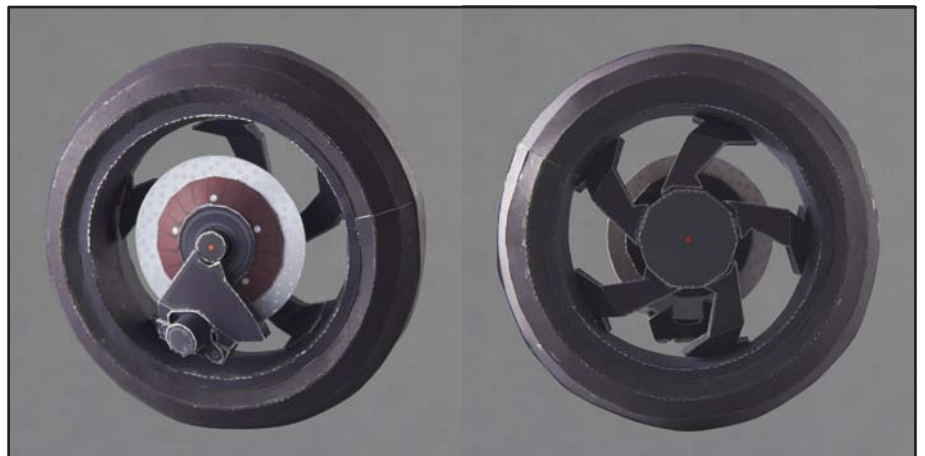
parts

Fold each relevant part according to the assembly symbols.

Please use the ● dots on each component as reference when gluing surfaces.



Reference photo



# 18 Assembling the Rear Flasher Light & Stand

First, assemble each component by following the working method and markings. Then, refer to the illustration and photos below to glue the parts together.

Indication of Working Methods

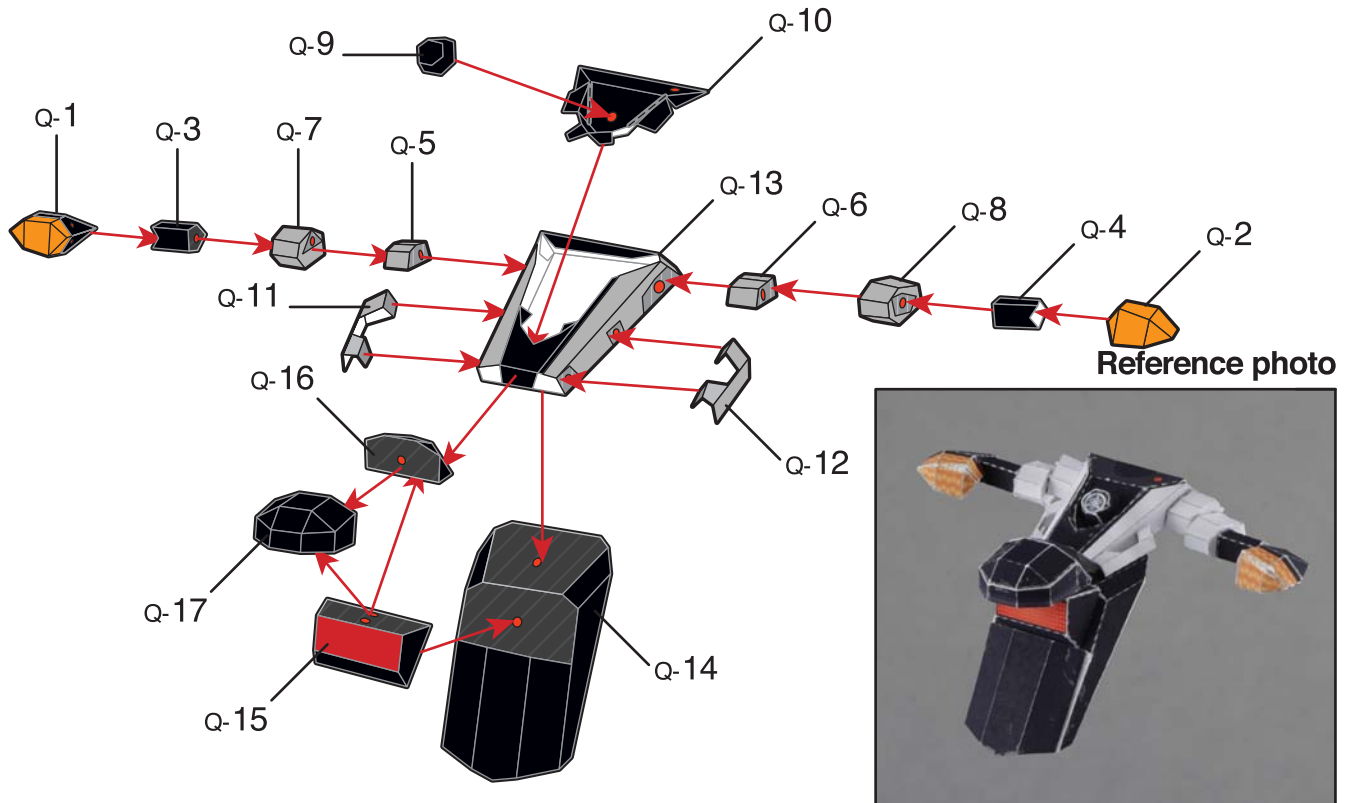
---> Fold or Curve --> Glue

## Rear Flasher Light

Sheet Q, 17 parts in total

Fold each relevant part according to the assembly symbols.

Please use the ● dots on each component as reference when gluing surfaces.



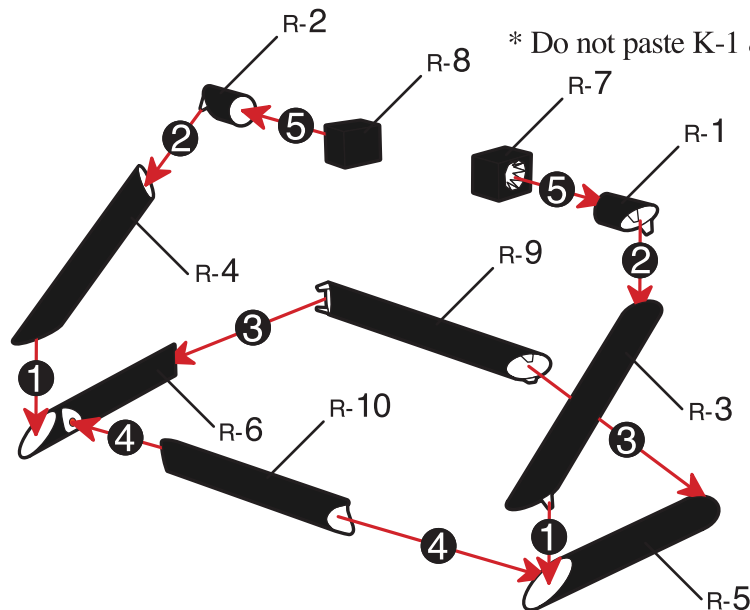
## Stand

Sheet R, 10 parts in total

Glue in order from ① to ⑤ on the graphic.

\* Do not paste K-2 & K-8.

\* Do not paste K-1 & K-7.



Reference photo

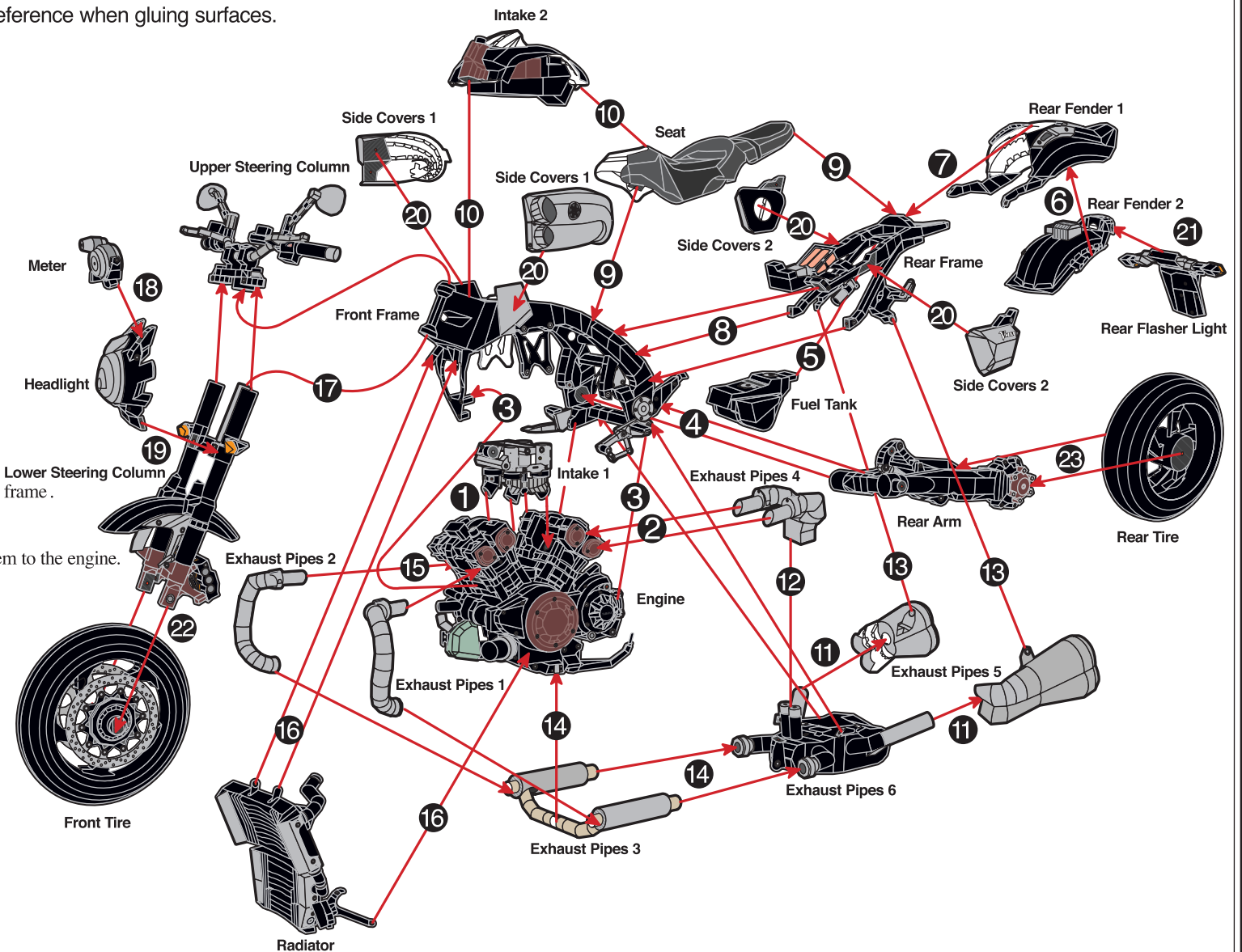


## 20 Finish

Please use the ● dots on each component as reference when gluing surfaces.

Connect each of the previously assembled parts in order from ① - ②③ according to the diagram.

- ① Glue the Intake 1 to the engine.
- ② exhaust pipes 4 the intake to the engine.
- ③ Glue the engine to the front frame.
- ④ Glue the rear arm to the front frame.
- ⑤ Glue the fuel tank to the rear frame.
- ⑥ Glue the rear fender 1 to the rear fender2.
- ⑦ Glue the rear fender 1 to the Rear frame.
- ⑧ Glue the rear frame. to the front frame.
- ⑨ Glue the seat to the front frame and rear frame.
- ⑩ Glue the Intake2 to the front frame and seat.
- ⑪ Insert the exhaust pipes 5 to the exhaust pipes 6.
- ⑫ Glue the exhaust pipes 6 to the exhaust pipes 4 and front frame.
- ⑬ Glue the exhaust pipes 5 to the rear frame.
- ⑭ Insert exhaust pipes 3 into exhaust pipes 6, then glue them to the engine.
- ⑮ Insert engine into exhaust pipes 1 and 2, then glue them to the exhaust pipes 3.
- ⑯ Glue the radiator to the front frame and engine.
- ⑰ Put the lower part of the steering through the frame and glue it to the upper part of the steering.
- ⑱ Glue the meter to the headlight.
- ⑲ Glue the headlight to the lower steering column.
- ⑳ Glue the side covers 1 and 2 to the frame.
- ㉑ Glue the rear flasher light to the rear fender 1.
- ㉒ Glue the front tire to upper part of the steering.
- ㉓ Glue the rear tire to rear arm.





## 21 Assembled Model and the List of Parts

Please refer to the photo below when attaching each component.

RIGHT

Frame  
Sheet C, 116 parts in total

Side Covers 1  
Sheet M, 20 parts in total

Steering  
Sheet G, 91 parts in total

Headlight  
Sheet H, 14 parts in total



Rear Arm  
Sheet D, 53 parts in total

Engine  
Sheet A, 189 parts in total

Intake 1  
Sheet B, 27 parts in total

Front Tire  
Sheet O, 28 parts in total

FRONT



Meter  
Sheet I, 11 parts in total

## 22 Assembled Model and the List of Parts

Please refer to the photo below when attaching each component.

LEFT



REAR

